

# Treasurer's Report

	2015 Actual 12.31.15	2016 Budget 01.01.16
<b>FLCF Annual Budget</b>		
January 1 cash available	\$4,085.00	\$4,897.82
<b>Cash Available</b>		\$3,897.82
<b>Revenue/Income</b>		
<b>Annual Revenue</b>	\$6,619.80	\$9,100.00
Cash available	<b>\$10,704.80</b>	<b>\$12,997.82</b>
<b>Expenses</b>		
Membership & Communications		
Total for Membership & Communications	<b>\$318.74</b>	<b>\$705.00</b>
Forest Projects		
Total for Forest Projects	<b>\$3,592.00</b>	<b>\$7,033.00</b>
Fundraising		
Total for Fundraising	<b>\$1,452.67</b>	<b>\$2,250.00</b>
Operations/Administration		
Total for Operations	<b>\$443.57</b>	<b>\$1,360.00</b>
<b>Annual expenditures</b>	<b>\$5,806.98</b>	<b>\$11,348.00</b>
Revenue vs. Expenditures	\$812.82	<b>(\$2,248.00)</b>
Total cash available	\$4,897.82	\$1,649.82

**Mission:** To facilitate the conservation and enjoyment of the Lincoln Community Forest

**Vision:** We envision the LCF as a community asset:

- That is rigorously managed throughout
  - to ensure a healthy, sustainable & scenic forest, and
  - to protect its natural and historic character.
- That provides in the South Unit a small network of primitive trails where the visitor can enjoy nature-based recreation.
- That preserves the North Unit in a largely undeveloped state.



**Annual Membership Meeting**  
**March 16, 2016**



# Annual Membership Meeting

- Elect new and renewing Board members
- Review financials
- Vote on bylaws amendments
- Socialize and celebrate our accomplishments
- Invite your input on priorities and needs
- Raise a little money
- Support a local business



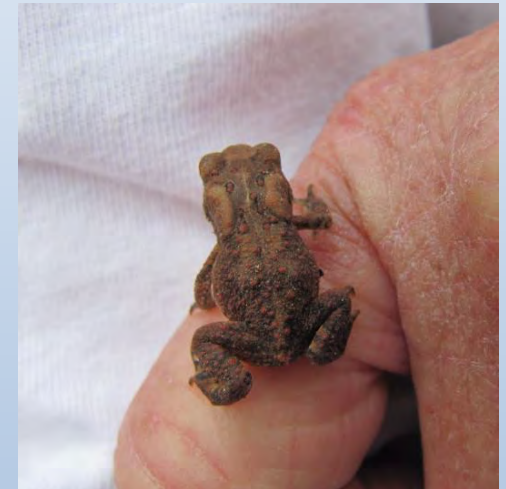
# **“Friends” this is what we’re all about!**



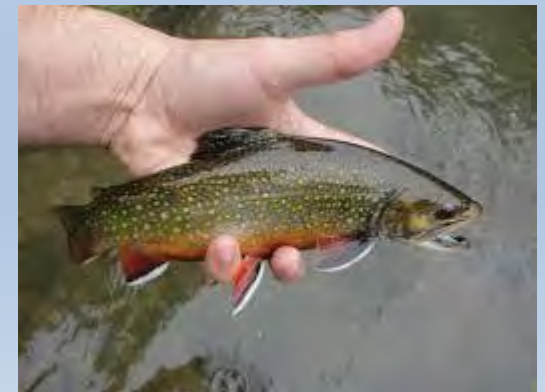
Working together ***“To facilitate the conservation and enjoyment of the Lincoln Community Forest”***



# ***“Conservation and Enjoyment of the Lincoln Community Forest”***



**Rare species conservation**  
**Nature-based recreation**





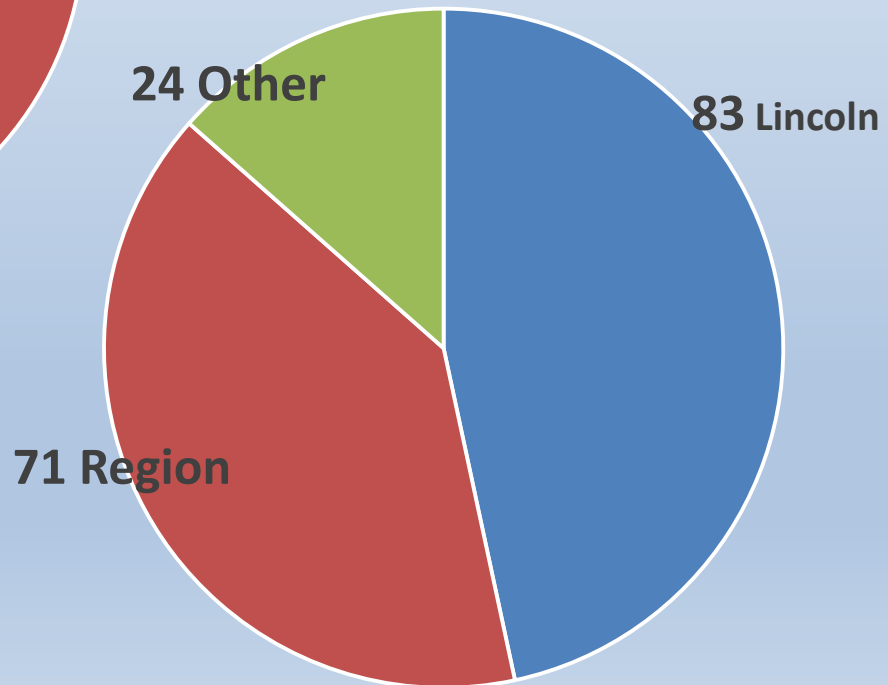
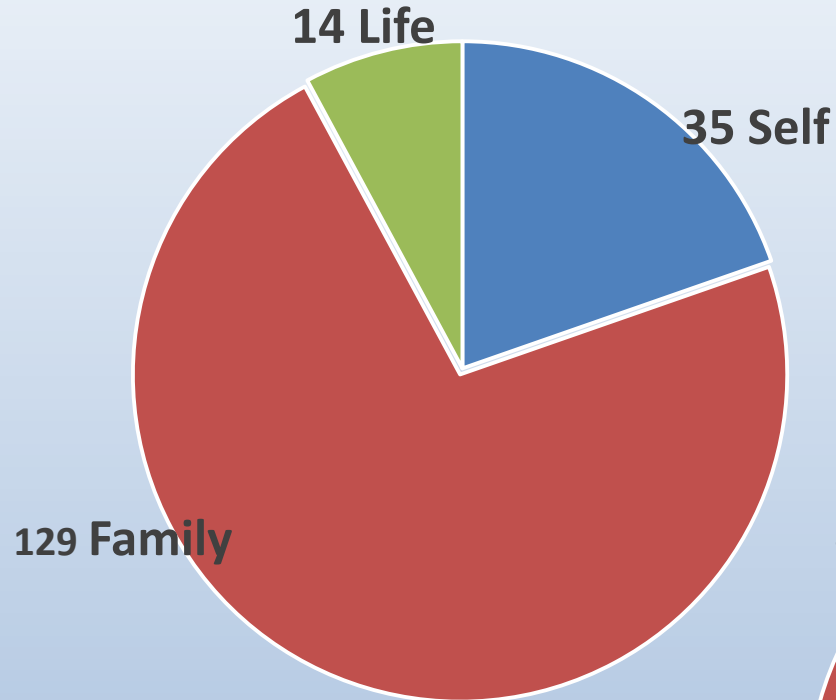
# Your Membership Means A Lot!!



- Give credibility to our organization in your numbers
- Donate your time, skills and \$\$\$
- Motivate others to lead by your example
- Provide ideas and inspiration through your feedback

# Membership Profile

178 members





# 2015 Highlights



# **Organization Accomplishments**

**Organizationally, in 2015 we:**

- Contracted with BRC to manage and add a history page to our Website, and created a Facebook page.**
- Conducted a strategic planning session, which resulted in valuable organization and guidance documents.**
- Drafted a vision statement for membership approval and ultimate inclusion in our bylaws.**



**Cleared brush and deadfalls, and put up trail makers along a 1 ½ mile-long foot trail.**





**Groom & mow > 1 mile of trail for hiking & skiing.**







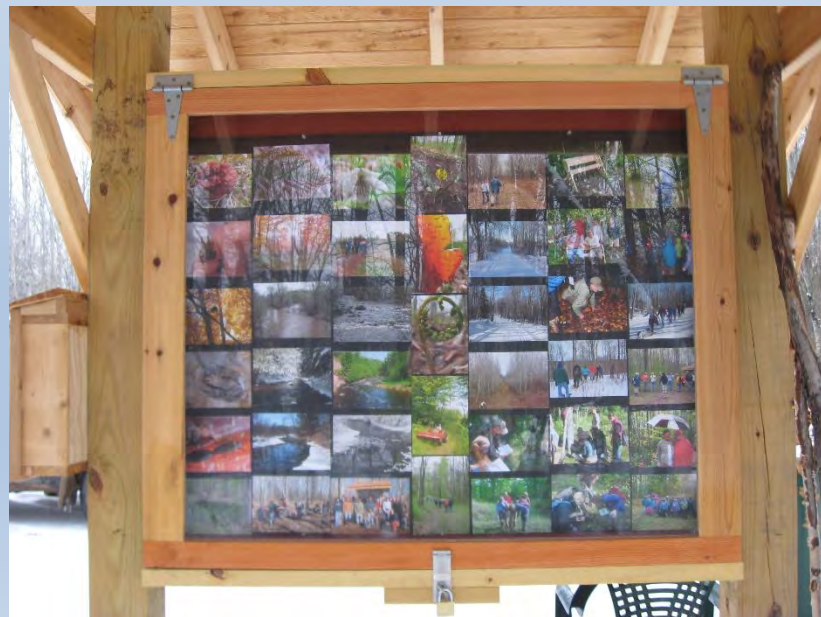


**Cleared brush, graded and re-seeded a tricky downhill on the ski trail**





# Finished parking lot & improved kiosk at trailhead.





# Birding and Nature Festival hike



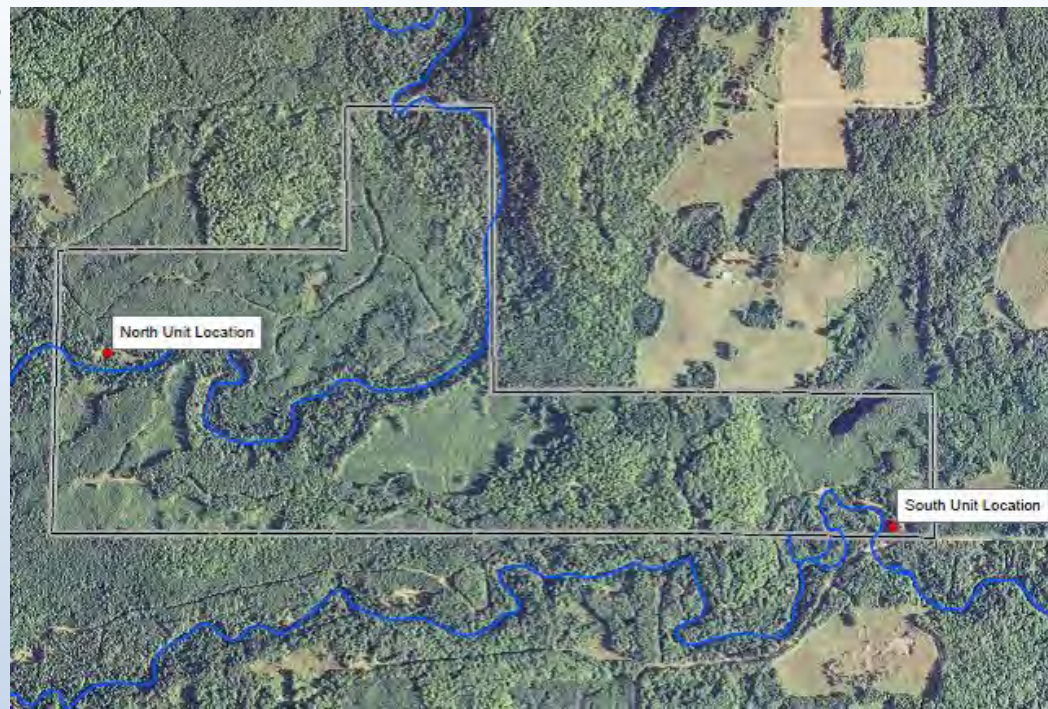


**Held numerous field inspections to find just the right spot to create safe nesting habitat for turtles.**





# Safe nesting for turtles





# Constructed 10 Leopold-style cedar benches





# We named a lake on the Forest !! Makinak Lake





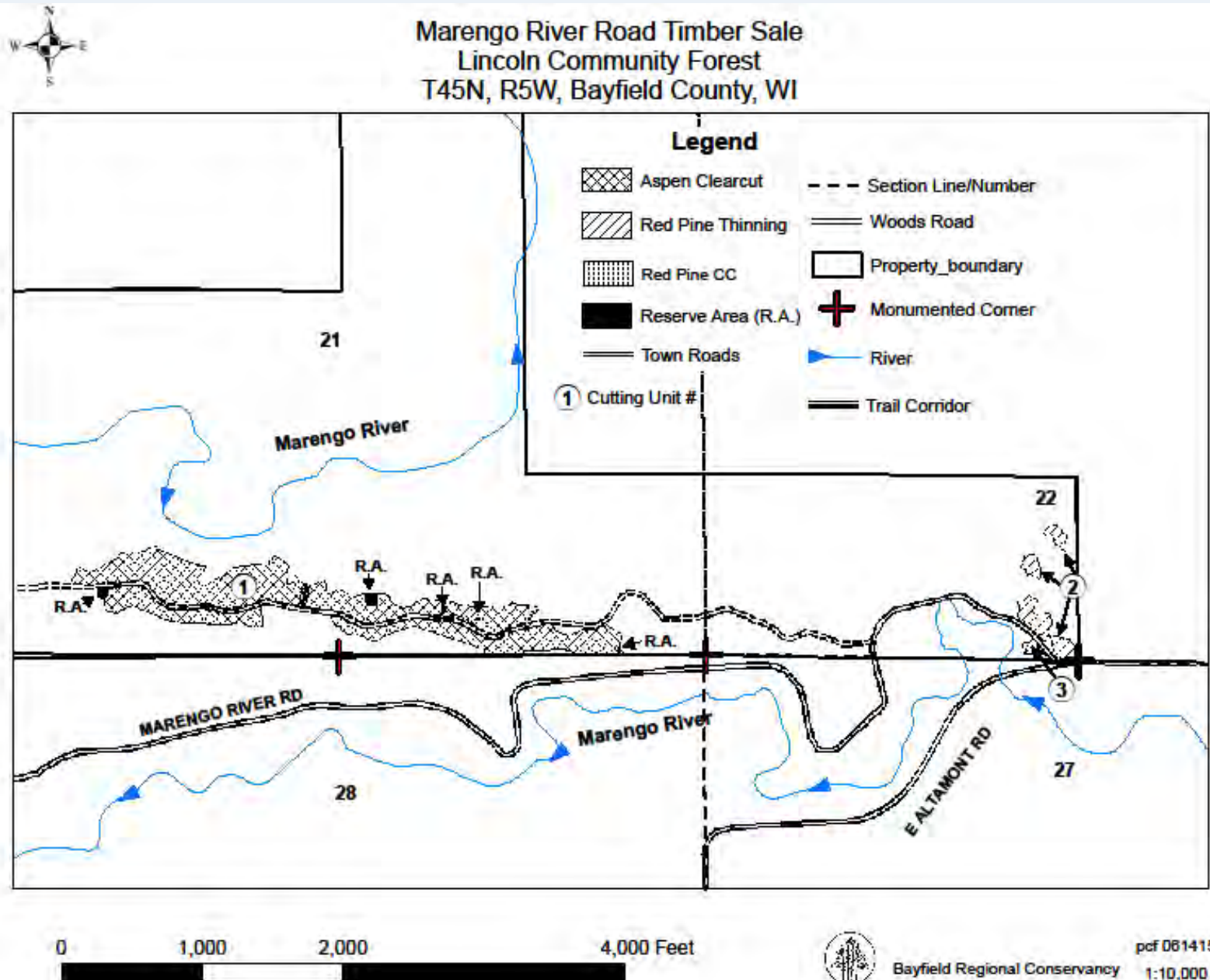
# Future Projects and needs (2016-2017)

- Clear young trees & brush from an old logging road in the north unit for hiking and access to turtle nest site project
- Set up signs, benches and hand-ropes along the hiking trail
- Construct and monitor turtle nesting project sites
- Organize and host a Public Lands Day hike on Sept 24
- Monitor timber harvest under MFL





# Timber harvest under MFL





# 2015 Fundraising

Revenue/Income	
Jan 1 cash available	\$4,898
memberships	\$3,000
donations	\$3,100
product sales	\$1,000
grants	\$2,000

**\$ (2,500)**

A lot of what we do is accomplished by volunteering your time, but we need \$\$\$ to purchase materials and hire professional services.

**Help us reach our \$2,500 shortfall in 2016.**

**Today renew memberships and bid on auction items now!!**

**Donate anytime.**



# TELL US WHAT YOU THINK!!

1. What do you like most about the Lincoln Community Forest or Friends Group?
2. What do you not like or wish was different about the Lincoln Community Forest or Friends Group?
3. The priority of the Friends Group in 2016 should be to.....
4. I volunteer my time to help the Friends Group with...
5. Other comments, questions?...





# Thank you for all you've done in 2015!!

Members  
Board Directors  
Bayfield Regional Conservancy



# What is a fat bike or snow bike?

